



- Automated GUI Testing (Qt, Web, Java, Tk, XView)
- Toolkit Migration
- Qt 4 Porting
- Training and Mentoring
- Development of Custom Components
- Qt Consulting

# The Company

froglogic GmbH is a software company based in Hamburg, Germany. froglogic was founded in 2003 by two former Trolltech senior software engineers. Given the success of froglogic's products in the market, froglogic is steadily growing in revenue and employees.

We are the creators of the professional cross-platform GUI testing tool Squish. Squish is the most popular and advanced tool to create and run automated GUI tests for Qt applications. Additionally Squish supports testing Web/HTML, Java SWT and AWT/Swing, Tk, 4JS and XView applications. We also offer Qt consultancy services, training, Qt porting and migration and other products such as Tq, a Qt/Tcl/Tk migration framework.

Our development team is very experienced in C++ and Qt. We support all platforms such as Windows, Linux, Mac OS X, Solaris, HP-UX, AIX, IRIX, FreeBSD and Tru64.

Given the strong Qt, KDE and C++ background of froglogic's founders and engineers, froglogic today is the leading supplier of Qt add-on products and knowledge.

If you would like to evaluate or purchase one of your products or are interested in our services, please contact us at [contact@froglogic.com](mailto:contact@froglogic.com).

# The Services

## Qt Porting

You need to port your Qt 3 application to Qt 4? We are the most qualified partner assisting you in this process having gained a lot of experience with porting projects and having developed in-house technology which eases the porting effort.

## Qt Migration

You want to migrate your application from a legacy toolkit to Qt? We already assisted many customers in this process and will be a competent partner for you.

## Development of Custom Controls

You need specialized custom controls for your Qt application? With our background and experience we are the most competent partner to implement special widgets for you.

## Mentoring and Training

You need an introduction or in-depth training in Qt or Squish? You need help designing or implementing your application? With our Qt and C++ experience we can provide you with the knowledge you need to get you up-to-speed and to help you meet your expectations.

# The Customers

We have a steadily growing customer base in industries such as EDA, Network, Pharmaceutical, Transportation and Oil and Gas. The following list includes some of our major customers:

- Reuters Financial Software
- Siemes AG
- Synopsys, Inc.
- EADS Deutschland GmbH
- Xilinx, Inc.
- Trolltech ASA
- TRUMPF Werkzeugmaschinen
- LogicaCMG plc
- Selden Integrated Systems, Inc.
- Pointwise, Inc.
- icoserve information technologies
- INTEC GmbH
- Language Weaver, Inc.
- CyphaWare Ltd
- Vector Software, Inc.
- Cassens Transports
- Four J's
- Vistagy, Inc.

# Tq

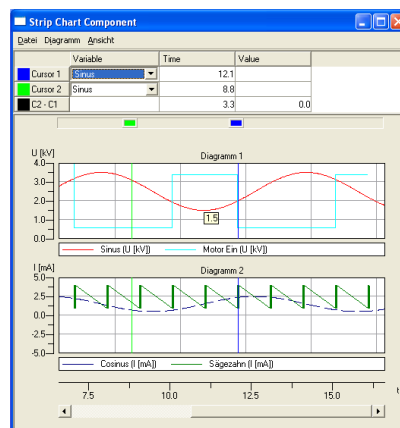
## The Tk/Qt Migration Framework

Tq is a library which eases migration from Tk based applications to Qt. It allows mixing Qt and Tk in one single application which enables you to incrementally port a Tk application to Qt or to embed Tk components into Qt applications.

Tq is, just like Qt, cross-platform and works on Linux/X11 and Unix/X11 platforms and on Windows. Tq supports Qt 3 and Qt 4.

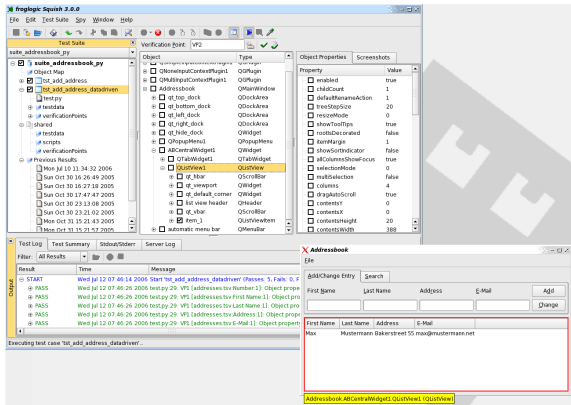
Most of Tq's work is done behind the scenes. To use Tq, no big changes need to be done to the application and no big APIs have to be studied. The only necessary change is to execute a mixed Tq event loop instead of instantiating a pure Qt event loop.

Tq doesn't only integrate Tcl/Tk's and Qt's event loop to ensure that events are delivered to the correct toolkit. Tq also ensures correct modal dialog behavior across toolkit boundaries and adjusts the colors of Tk widgets to follow Qt styles as close as possible. Additionally, Tq unifies copy & paste and drag'n'drop across toolkit boundaries to allow creating user-friendly mixed Tk/Qt applications.



# Squish

## The Leading Cross-Platform GUI Testing Tool



Squish is the most advanced automated GUI testing tool for cross-platform GUI applications. Squish's strength is the close integration into the supported GUI technologies such as Qt that allows creating robust tests and give test engineers maximum control. This way Squish has built-in detailed knowledge of the GUI controls used in the application and even allows calling the toolkit's and application's APIs from test scripts.

Squish allows to easily create, record, edit, debug and run automated tests using your favorite scripting language such as Python, Tcl and JavaScript without the need to modify your application.

Tests created with Squish are robust and easily maintainable and do not depend on screen coordinates or resolutions. The powerful

Squish IDE provides all means to create and run tests in a comfortable point & click environment without the need to manually write script code. In addition Squish's tight integration with scripting languages and technologies such as data-driven testing gives users a tool to create powerful, sophisticated and advanced tests.

Squish is completely cross-platform. The same Squish test scripts can be used to test your application on Windows, Linux, Unix, Mac OS X and embedded Linux. It is even possible to test applications remotely across platform boundaries, such as controlling a tests from a Windows PC which tests an application on a Mac OS X machine.

Another feature which sets Squish apart from any other GUI test tool is the ability to control multiple applications running on different hosts or platforms from a single test script. This, for example, allows testing complex client/server systems including the interaction between different clients.

Using command line tools and plugins for test management systems such as Mercury Test Director, regression testing can be easily automated and integrated into existing testing environments. This also allows to easily analyze and manage test results and reports which is a vital part of the quality assurance process.

## Squish Editions Overview

	Squish/Qt	Squish/Web	Squish/SWT	Squish/Swing	Squish/4JS	Squish/Tk
<b>Supported Technology</b>	Qt 4.x Qt 3.x Qt 2.3 Qtopia Qt Jambie	HTML DHTML Web 2.0 Ajax	Java SWT	Java Swing Java AWT	GDC (Qt) GWC (Web) GJC (Java/Swing)	Tcl/Tk
<b>Supported Systems</b>	Windows Linux/Unix Embedded Linux Mac OS X	Internet Explorer Firefox/Mozilla Safari Konqueror	Windows Linux/Unix Embedded Linux Mac OS X	Windows Linux/Unix Embedded Linux Mac OS X	Windows Linux	Windows Linux/Unix Mac OS X

*Squish is a high quality GUI testing tool that follows the guiding principle for Qt: making life easier for developers*

*Squish has proven to be a light and robust solution that can be deployed at a very reasonable cost. For this reason, last year, we chose Squish to test our XView- and Qt-based flagship product Kondor+. We decided to port exactly the same approach and methodology to the rest of our product line: KGR, Web Access and K+TP (Web based). For the test tool part, the new Squish/Web now also offers the ability to test HTML/JS applications. We are already using it and we are today able to reuse scripts and test cases for the tests of the Web based applications. Squish/Web shows the same quality level and features as Squish/Qt and Squish/XView.*

*Eirik Chambe-Eng  
co-CEO and co-founder  
Trolltech ASA*

*Thierry Duchamp  
Head of Quality Assurance for Risk  
Reuters Financial Software*

*The froglogic team's quick response time, thorough explanation and flexibility really shines through. We look forward to using Squish and to the excellent support.*

*Chong Lee  
MSCSoftware*

## The froglogic Team

### **Reginald Stadlbauer** CEO / co-founder

Reginald Stadlbauer was born in Graz, Austria where he attended high school and the Technical University. In the summer of 1997 he joined the KDE project where he co-initiated the KOffice project and wrote the initial version of KPresenter and also worked on KWord.

In 1999 he started working for Trolltech AS as a software engineer. In his 4 years at Trolltech, Reginald became a senior software architect leading projects such as Qt Designer and Qt's complex widgets.

Reginald co-founded froglogic in 2003.



### **Harri Porten** CEO / co-founder

Harri Porten is of German and Finnish descent. He studied at the Technical University of Hamburg-Harburg and the University of Waterloo. He also joined the KDE project where he played a leading role in projects such as KJS, the JavaScript interpreter that is used by the web browsers Konqueror and Apple's Safari.

In 2000, Harri started working as a software engineer at Trolltech AS where he oversaw the portability of the Qt GUI toolkit to different compilers and operating systems. Later he was a leading member of the QSA team.

Harri co-founded froglogic in 2003.

### **Rainer Schmid** Senior Software Engineer

Rainer Schmid was born in Germany and studied computer science and mathematics at the Uni of Saarbrücken.

After finishing his studies he worked as C++ programmer in Kaiserslautern, just before he moved on to Trolltech AS in May 2000 as a software engineer. At Trolltech, Rainer worked mainly on the non-GUI classes, including network and XML support. In the end he was leading the newly founded Qt Solutions group that provides add-ons to the Qt library.

Rainer joined froglogic in spring 2005.

### **Frerich Raabe** Software Engineer

Frerich Raabe was born and lives in Germany. He started developing software using C++ and Qt after joining the KDE project in 1999. His work in the KDE project consists of many additions to KDE's core libraries, the KNewsTicker RSS aggregator, major refactorings to KDE's help center and the XMLRPC backend of the Kontakt PIM Suite.

Frerich joined froglogic in summer 2005.

### **Koos Vriezen** Software Engineer

Koos Vriezen was born in Arnhem, Netherlands and studied math and physics in Nijmegen. After a few years as a math and physics teacher, he switch to a computer courses institute and later worked as C++ programmer in various projects such as the development for the Dutch grammar checking tool for Microsoft's Office.

Three years later he got involved with KDE in his spare time fixing some bugs in KHTML. Later he specialized on KPart usage in KHTML, improved the Java applet support and added the KMPlayer video plugin.

Koos joined froglogic in spring 2006.